

Blacksmiths Close , Romford, RM6 4XE

Nestled in the charming area of Blacksmiths Close, Romford, this delightful one-bedroom property offers a perfect blend of comfort and convenience. Spanning an efficient 291 square feet, this home is ideal for individuals or couples seeking a low-maintenance living space.

The property features a well-appointed reception room that provides a welcoming atmosphere, perfect for relaxation or entertaining guests. The kitchen comes fully equipped with essential appliances, making meal preparation a breeze. The newly installed three-piece bathroom adds a touch of modernity and style, ensuring a pleasant experience for residents.

Constructed in 1985, this property benefits from electric heating throughout, ensuring warmth during the cooler months. The double-glazed windows not only enhance energy efficiency but also contribute to a peaceful living environment by minimising outside noise.

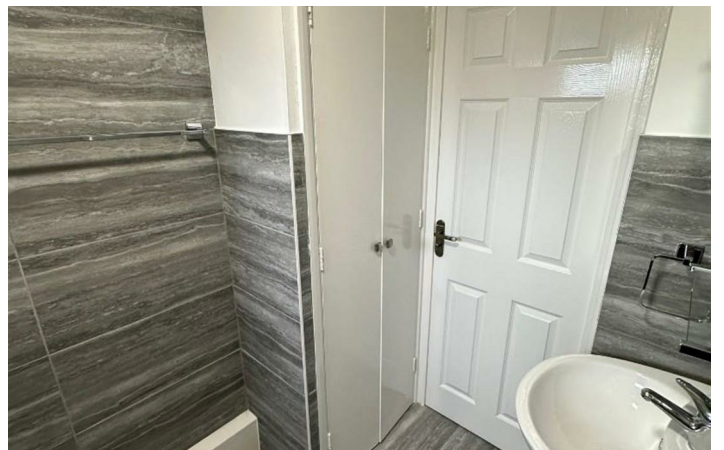
£1,250 Per Month

Blacksmiths Close

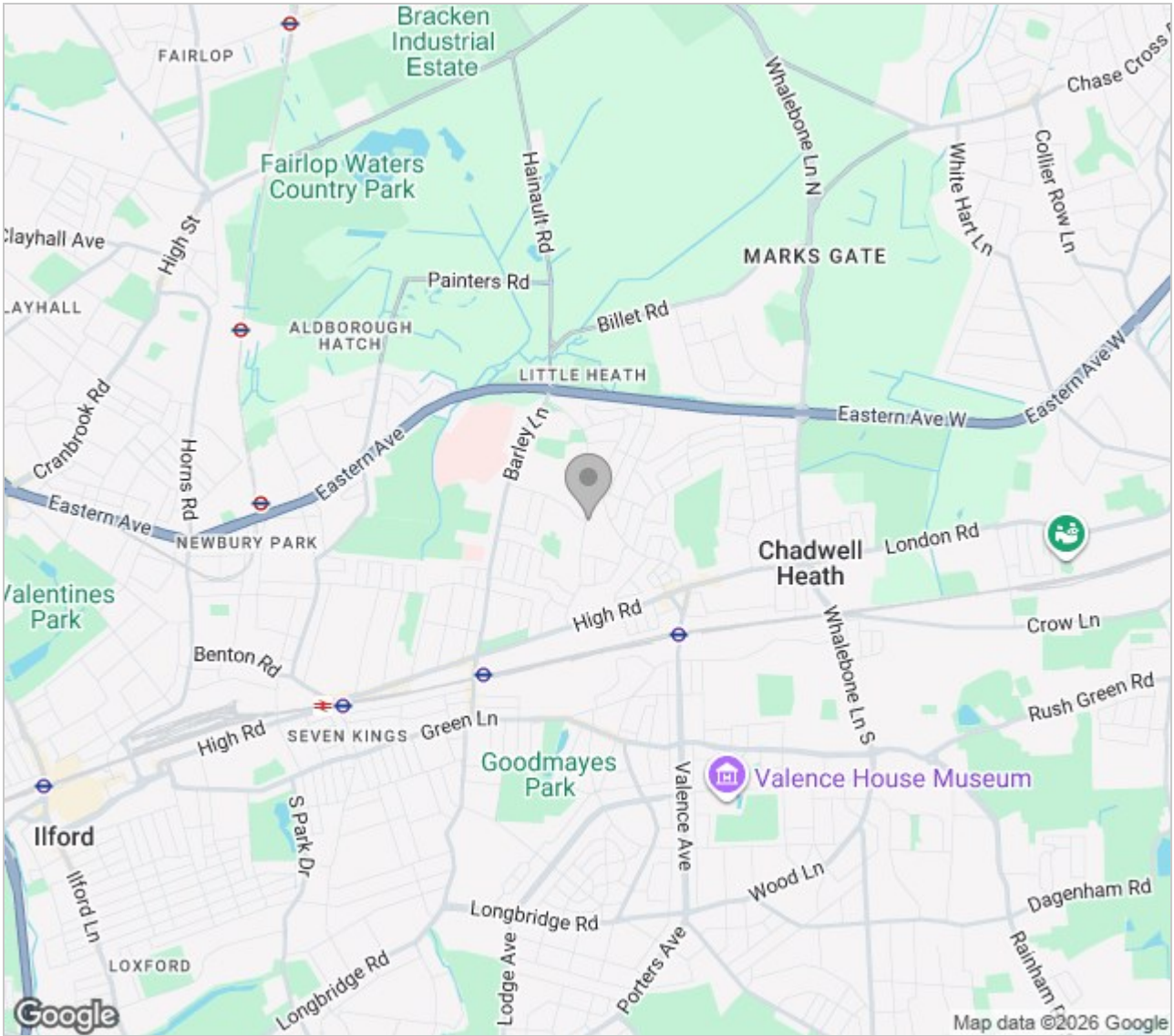
, Romford, RM6 4XE



Directions



Area Map



Energy Efficiency Rating		Current	Potential
Very energy efficient - lower running costs			
(92 plus)	A		
(81-91)	B		
(69-80)	C		
(55-68)	D		
(39-54)	E		
(21-38)	F		
(1-20)	G		
Not energy efficient - higher running costs			
England & Wales		EU Directive 2002/91/EC	

Environmental Impact (CO ₂) Rating		Current	Potential
Very environmentally friendly - lower CO ₂ emissions			
(92 plus)	A		
(81-91)	B		
(69-80)	C		
(55-68)	D		
(39-54)	E		
(21-38)	F		
(1-20)	G		
Not environmentally friendly - higher CO ₂ emissions			
England & Wales		EU Directive 2002/91/EC	

These particulars, whilst believed to be accurate are set out as a general outline only for guidance and do not constitute any part of an offer or contract. Intending purchasers should not rely on them as statements of representation of fact, but must satisfy themselves by inspection or otherwise as to their accuracy. No person in this firm's employment has the authority to make or give any representation or warranty in respect of the property.



5 Turnpike Parade Green Lanes, London, N15 3EA
 Tel: 0208 888 3556 Email: info@easypropertieslondon.co.uk
www.easypropertieslondon.co.uk